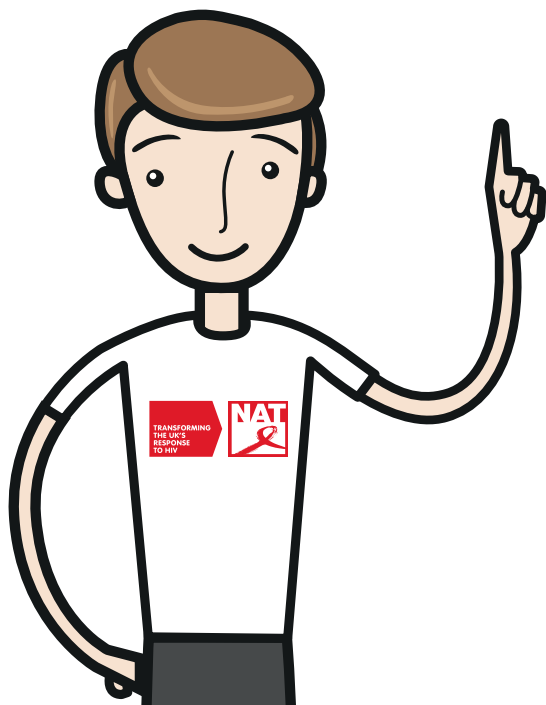


## We can't do this without you!


- ➦ Become a volunteer. We are always looking for people to help us out in the office, at events or during World AIDS Day.
- ➦ Fundraising for NAT at work, university or school. Or take part in a challenge for NAT, for example Tough Mudder or the Red Run.
- ➦ Sign up to our regular newsletter which will keep you up-to-date about our latest campaigns and research.



Find out more about HIV in the UK and supporting NAT as well as signing up to the newsletter, by visiting NAT's website [www.HIVAware.org.uk](http://www.HIVAware.org.uk)

## To Donate

We can't survive without your help so please support us by donating today.

 One-off and regular donations: you can use a credit or debit card, or direct debit. Visit [nat.org.uk](http://nat.org.uk) and click on the donate button.

 By Text to 70070: GHIV10 £5, GHIV10 £10, GHIV10 £20 (or GHIV10 followed by any amount)

 Telephone: You can call us and pay over the phone 020 7814 6767

 Cheque: Payable to NAT. Our office address is NAT, New City Cloisters, 196 Old Street, London EC1V 9FR

TRANSFORMING  
THE UK'S  
RESPONSE  
TO HIV



Shaping  
Attitudes

Challenging  
Injustice

Changing  
Lives



National AIDS Trust:  
leading HIV policy  
and campaigning

Over the past three decades we have made a huge difference to the lives of tens of thousands of people living with HIV in the UK by influencing the Government and driving positive change. NAT is completely independent, so we can challenge injustice wherever we see it – always led by the issue not where the money is.

### Our mission is to:

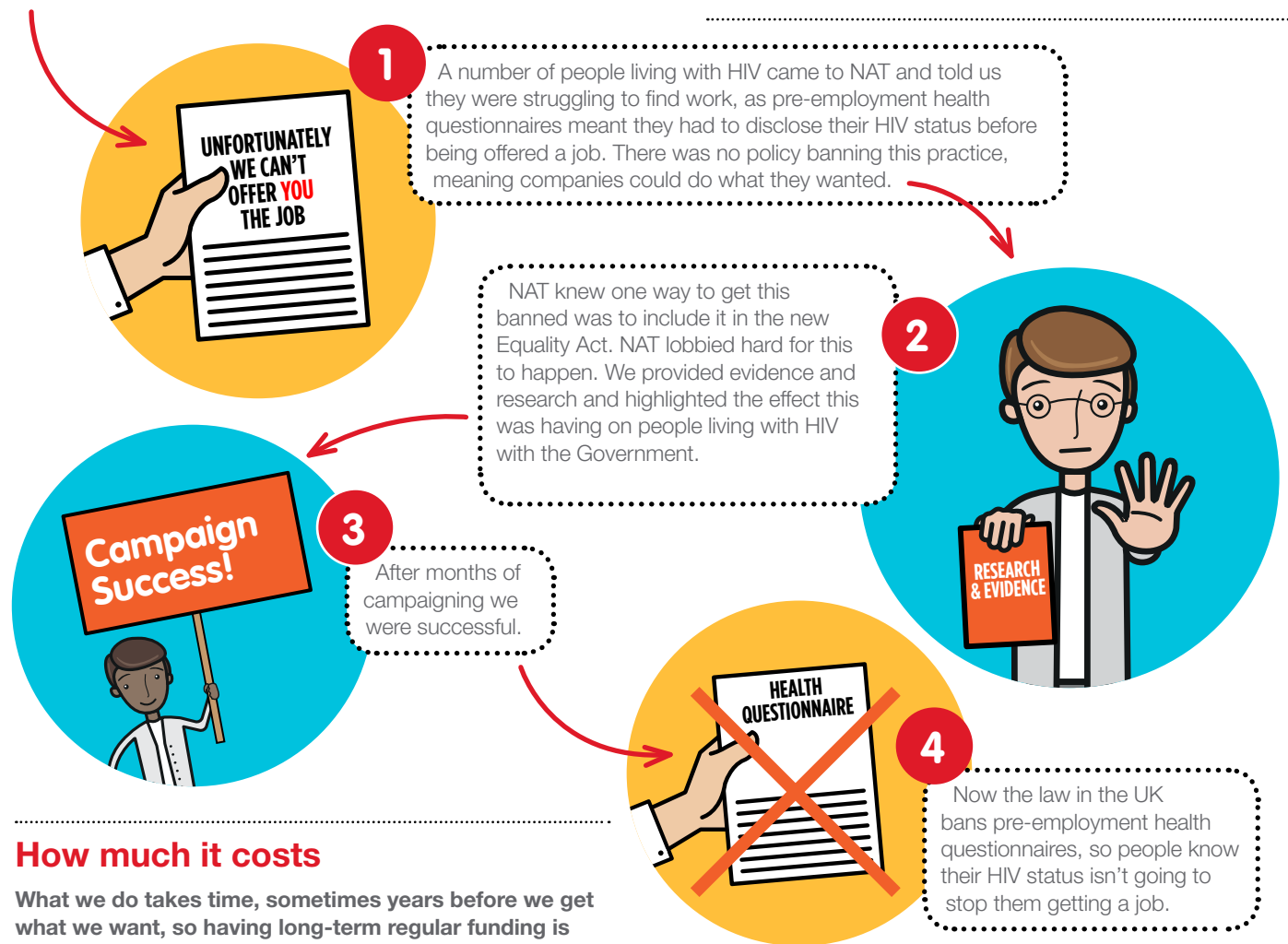
- ⊖ Halt the spread of HIV.
- ⊖ Increase HIV testing.
- ⊖ Ensure access for all to HIV treatment, care and support.
- ⊖ Educate the public about HIV.
- ⊖ Eradicate HIV-related stigma and discrimination.

But we can only make these goals a reality with your help.

### Why we are needed:

- ⊖ The number of people living with HIV is increasing.
- ⊖ One in 360 people has HIV - and one in four don't even know they have it.
- ⊖ People know less about HIV than 15 years ago.
- ⊖ In 2014, 16% of people thought you could get HIV from kissing, compared to only 6% in 2000.
- ⊖ Less money is being spent to prevent HIV.
  - ⊖ £15 million spent in 2013/14 versus £55 million spent in 2001/02.
- ⊖ People living with HIV face unacceptable stigma and discrimination.
  - ⊖ Almost half of people living with HIV report feeling guilty and ashamed because of it.

## Policy in practice – this is how it works



**NAT is a policy and campaigns organisation, but what does that mean? What is policy?**

Policy is the backbone of everything that happens in our country; it is the laws, the regulations and the guidance which affect every aspect of all of our lives. So to change society, we have to change policy.

### How much it costs

What we do takes time, sometimes years before we get what we want, so having long-term regular funding is vital for us.

**£25 per month** means we can run our Press Gang network, giving people living with HIV the opportunity to challenge misleading and stigmatising media coverage.

**£2 means** we can provide a young person at risk of HIV the information they need to protect themselves through our website [HIVAware.org.uk](http://HIVAware.org.uk).

**£10 per week** from you would help us to continue our work leading a movement of people to demand same-sex inclusive Sex and Relationships Education for all young people in all schools.